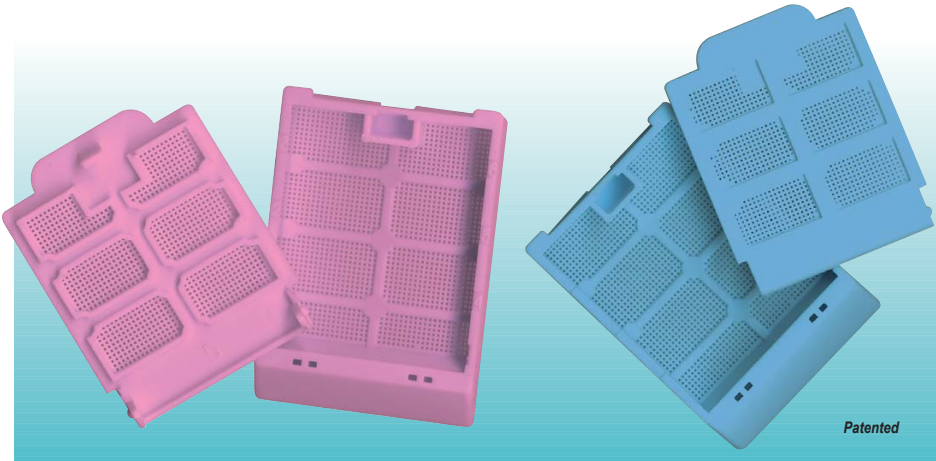


# M502 MICROSETTE® I

BIOPSY PROCESSING / EMBEDDING CASSETTES (with lid)

Made of acetal polymer

Biopsy pads are no longer necessary with these innovative disposable plastic biopsy cassettes with a large compartment measuring 25 x 30 mm. Perfect even with needle biopsies since holes have a diameter of only 0.26 mm while still allowing for maximum fluid exchange. Molded from a special high density polymer, these **patented** cassettes keep specimens safely submerged in liquid and are totally resistant to the chemical action of histological solvents. The Microsette® I mesh ensures efficient fluid exchange and drainage. The one-piece integral lid eliminates the need for separate steel lids. They can be opened and closed as often as necessary and they always relock securely without danger of specimen loss. Large labeling areas are located on three sides of the cassettes for your convenience. Anterior writing area is at a 45° angle to make the cassette more suitable, in some instances, to be used with certain types of cassette labeling instruments. Each case contains four dispenser boxes of 250 cassettes with covers assembled.



Cat. #	Color	Qty/Cs
M502-2	White	1000
M502-3	Pink	1000
M502-4	Green	1000
M502-5	Yellow	1000
M502-6	Blue	1000
M502-7	Peach	1000
M502-8	Tan	1000
M502-9	Gray	1000
M502-10	Lilac	1000
M502-11	Orange	1000
M502-12	Aqua	1000
M502-16	Fluo Pink	1000
M502-17	Fluo Green	1000
M502-18	Fluo Yellow	1000

### ANATOMY OF A MICROSETTE® I

Cassettes on this page can be used in leading automatic cassette labeling instruments 

# M503 MICROSETTE® I

BIOPSY PROCESSING / EMBEDDING CASSETTES

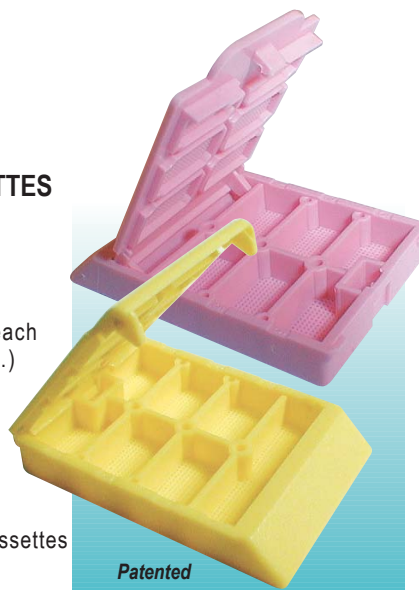
6 compartments

Made of acetal polymer

This model can hold up to six tissue specimens, each one placed in it's own 7 x 12mm (1/4 x 7/16 in.) compartment numbered from 1 to 6.

Cover and base have over 3000 square openings to maximize fluid exchange and ensure proper drainage. Approximately 170 holes (each having a diameter of 0.26 mm) per compartement.

Each case contains four dispenser boxes of 250 cassettes with covers assembled.



Cat. #	Color	Qty/Cs
M503-2	White	1000
M503-3	Pink	1000
M503-4	Green	1000
M503-5	Yellow	1000
M503-6	Blue	1000
M503-7	Peach	1000
M503-8	Tan	1000
M503-9	Gray	1000
M503-10	Lilac	1000
M503-11	Orange	1000
M503-12	Aqua	1000
M503-16	Fluo Pink	1000
M503-17	Fluo Green	1000
M503-18	Fluo Yellow	1000